



# Emergency Planning Society

National Conference 2023

7 - 8 November, Manchester UK

*Sponsorship and exhibiting opportunities*



## What we do

The Emergency Planning Society is the UK and Republic of Ireland's professional association for all those working in the resilience sector.

Working mainly in the local government, emergency services, military and health sectors, our 1,000+ members are from all fields across the resilience spectrum, including:

COMAH and Pipelines • Crowd & Event Safety • Health • Humanitarian Aspects • Environment Agency • Community Resilience • Oil Pollution • Business Continuity • Flood Resilience & Water Management • CBRNe • Academia • Voluntary & Private sector • Communications



## The benefits for you

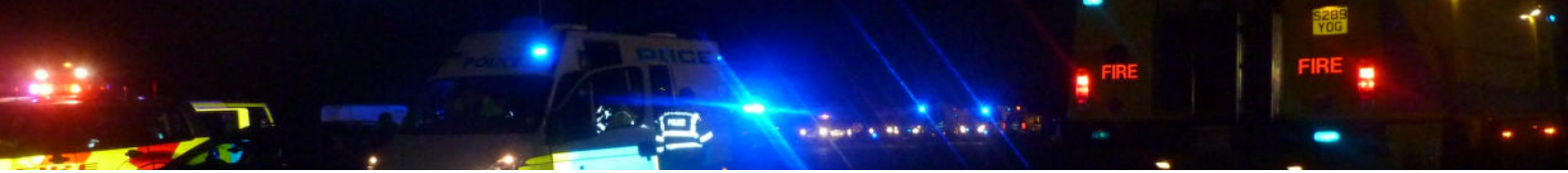
Over 140 delegates are expected at the event to be held at the Mercure Piccadilly Hotel, Manchester. As well as two days of fascinating discussion, as it is our association's 30th anniversary we will also be holding a celebratory awards ceremony, dinner and dance.

Sponsorship and branding offers your organisation exposure to the key practitioners in the resilience and emergency response sector, many of them budget holders or who have influence on procurement processes. It is a unique opportunity to network directly with the key players in this Sector. To find out more or book your place contact the EPS on:

**info@the-eps.org**

**Tel: 01347 821972**





# The offer

## Sponsorship & branding

### DRINKS RECEPTION **£1,000 (+VAT)**

- Including welcome to guests
- Logo on menu
- 2 Places at the Awards Dinner Dance

### LANYARDS AND BADGES **£700 (+VAT)**

- Logo on Lanyards and badges
- Your company information in delegate pack
- Quarter page advert in Programme

### DELEGATE PACKS **£700 (+VAT)**

- Logo included on packs
- Your company information in delegate pack
- Quarter page advert in Programme

### PROGRAMME **£700 (+VAT)**

- Logo in programme
- Your company information in delegate pack
- Quarter page advert in Programme

## Advertising

### Advertising in CONFERENCE PROGRAMME:

FULL PAGE **£750 (+VAT)**  
270mm deep x 183mm wide

HALF PAGE : **£400 (+VAT)**  
Vertical: 270mm deep x 90mm wide. Horizontal: 130mm deep x 183mm wide

QUARTER PAGE : **£250 (+VAT)**  
130mm deep x 90mm wide

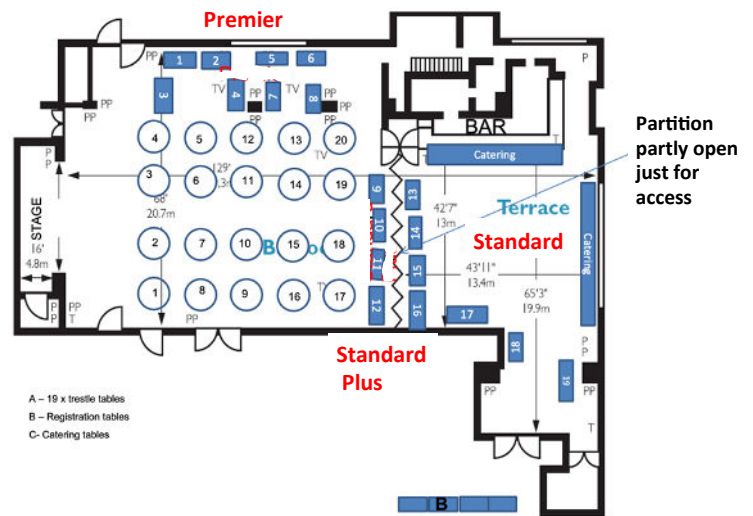
### Advertising in *RESILIENCE* magazine



There is also opportunities to advertise in the next issue of the EPS's journal, *Resilience*, which is direct-emailed to all EPS members, and printed copies are distributed at key resilience sector trade fairs.

Costs and dimensions are the same as above for the Conference Programme

### International Suite, Mercure Piccadilly Hotel, Manchester



\*Please Note that this diagram is NOT drawn to scale and may look slightly different on the day of the event.

## Exhibitors

### **PREMIER** **£1,200 (+VAT)**

Stand size: 6 ft x 6 ft  
Stands available: 4

- This includes **premier** location within the conference area of the International Suite two seats at the two day conference, including lunch and refreshments.
- Half Page Advert in Programme:  
Vertical: 270mm deep x 90mm wide  
Horizontal: 130mm deep x 183mm wide
- Half Page Advert in the next edition of *Resilience* Magazine  
270mm deep x 90mm wide

### **STANDARD PLUS** **£800 (+VAT)**

Stand size: 6 ft x 6 ft  
Stands available: 8

- This includes **Standard Plus** location within the two day conference area of the International Suite, two seats at the conference plus refreshments & lunch.
- Quarter Page advert in Programme:  
130mm deep x 90mm wide

### **STANDARD** **£500 (+VAT)**

Stand size: 6 ft x 6 ft  
Stands available: 8

- This includes **Standard Space** location within the Terrace of the International Suite, two seats at the conference plus refreshments & lunch